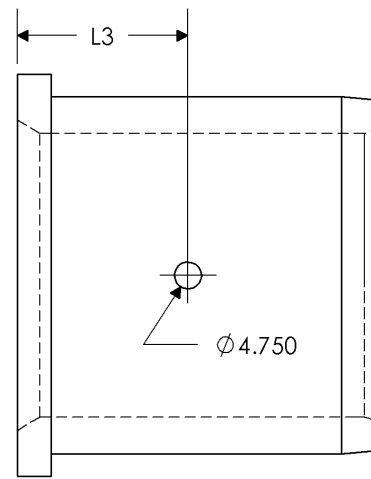
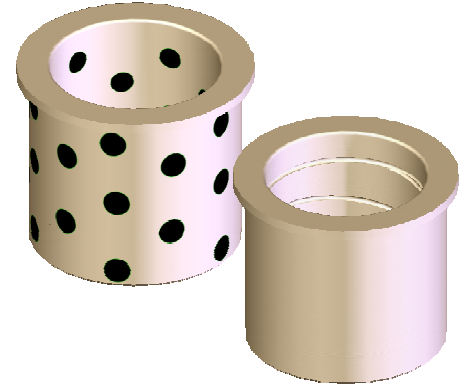
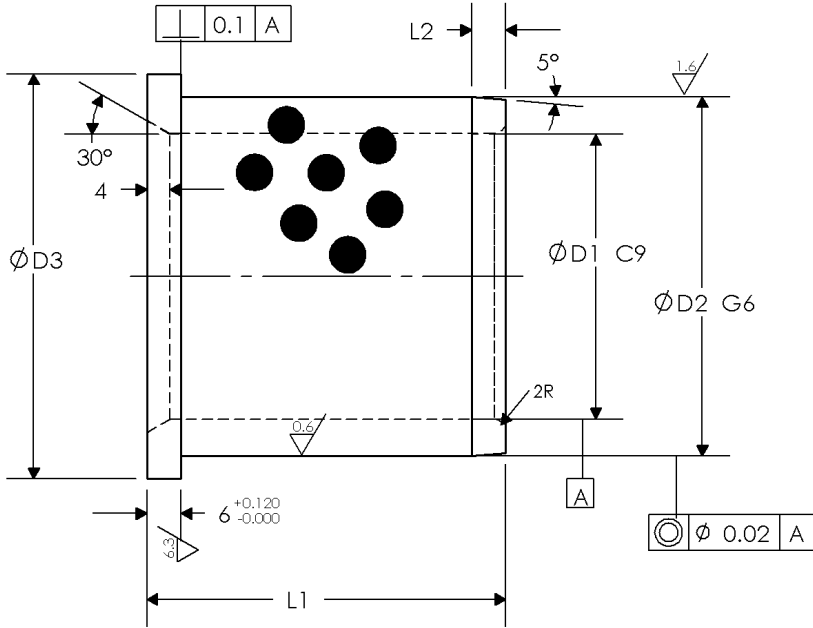


Standard with Graphite



Bushings to be supplied with (3) G72000C toe clamps. Evenly distributed graphite to cover 20-30% of the sliding surface. Graphite to be positioned to insure overlapping in a linear slide direction.

Optional with Grease Grooves

**Materials:** Aluminum Bronze w/Graphite Plugs

Catalog Number	NAAMS Number	D1	D1 tol	D2	D2 tol	D3	L1	L2	L3	# Clamps
NM25PAD	G712540	25	+0.162 +0.110	32	-0.009 -0.025	40	40	4	20	3
NM32PAD	G713250	32	+0.182 +0.120	40	-0.009 -0.025	50	50	4	20	3
NM40PAD	G714055	40	+0.182 +0.120	50	-0.009 -0.025	63	55	5	20	3
NM50PAD	G715063	50	+0.192 +0.130	63	-0.010 -0.029	71	63	6	30	3
NM63PAD	G716375	63	+0.214 +0.140	80	-0.010 -0.029	90	75	8	30	3
NM80PAD	G718090	80	+0.224 +0.150	100	-0.012 -0.034	112	90	10	30	3
NM100PAD	G711011	100	+0.257 +0.170	125	-0.014 -0.039	140	115	12	40	3
NM125PAD	G711213	125	+0.300 +0.200	160	-0.014 -0.039	180	138	12	40	6

**Ordering Note:** Add "P" suffix for grease grooves instead of graphite.